

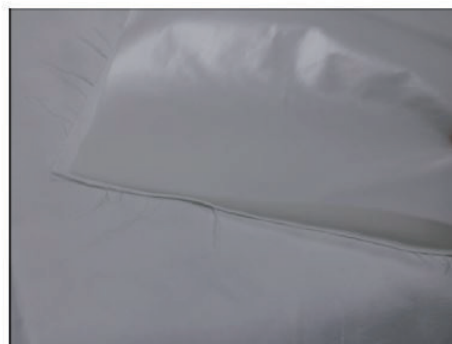
000120. Appliqué Coaster



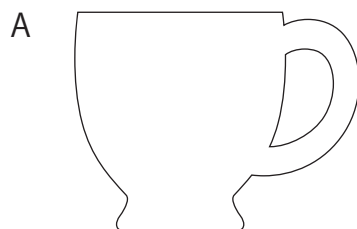
Material

Appliqué fabric
Base fabric (15 cm × 30 cm)
Iron-On Fabric Applique Contact Sheet
Sewing machine thread
Sewing machine
Sewing Scissors
Ruler

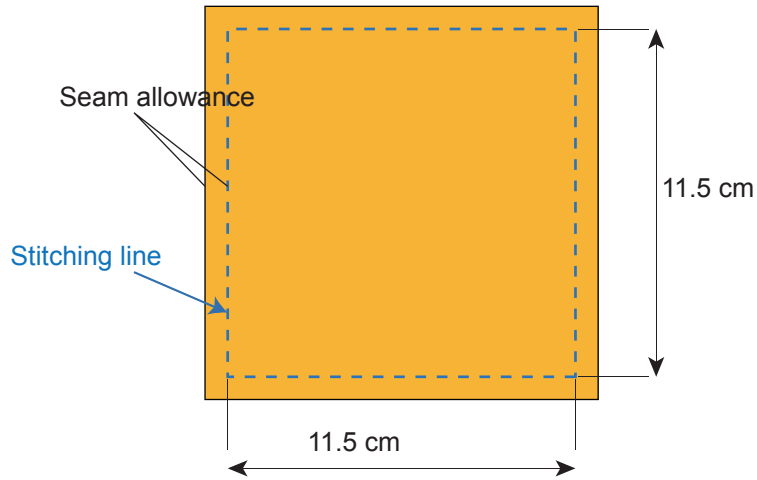
(1) Attach Iron-On Fabric Applique Contact Sheet to the back of the appliqué fabric. (For details, refer to the instructions included with the sheet.)



(2) Cut out the parts.



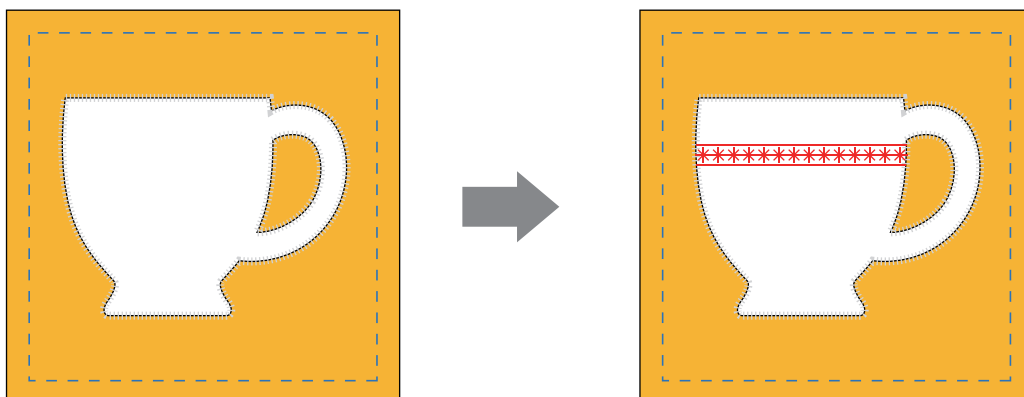
(3) Cut out two pieces of the base fabric with the seam allowance, as shown below.



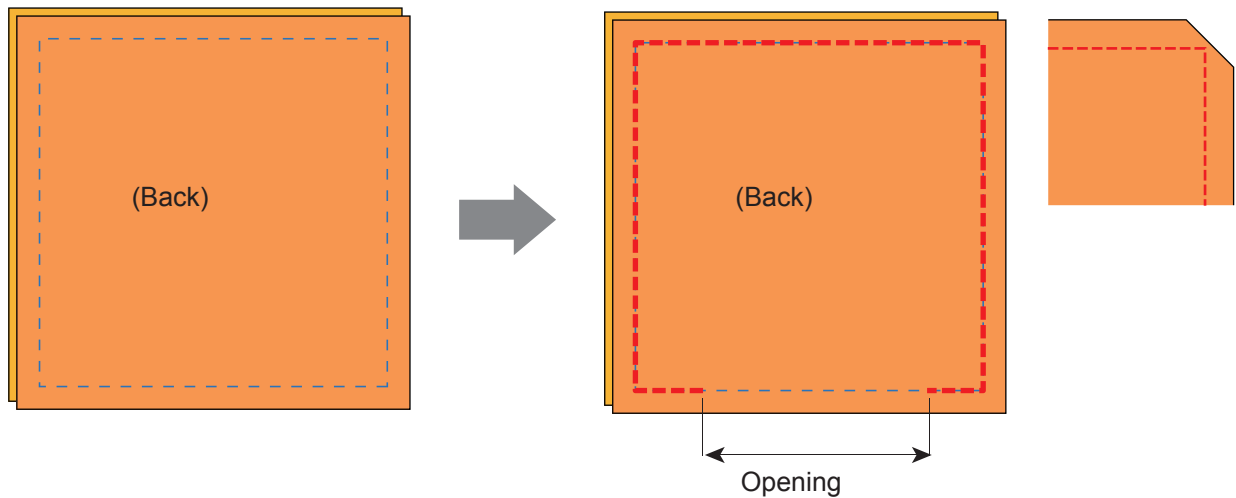
(4) Refer to the layout pattern on the last page to iron onto the appliqué fabric shown in step (2).



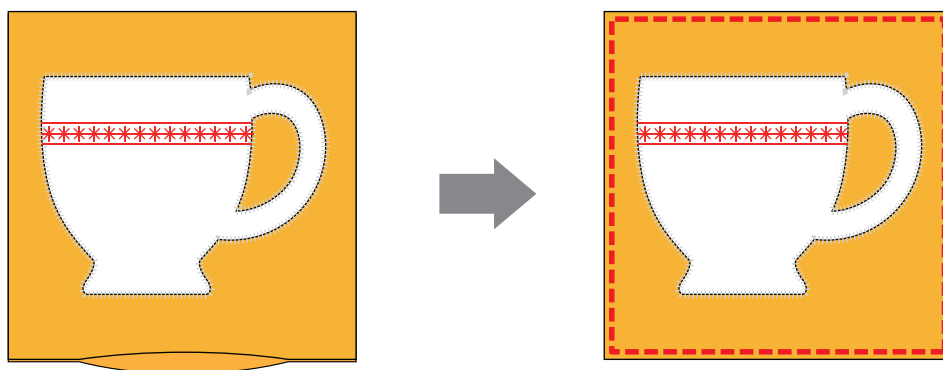
(5) Sew the cup outline with zigzag stitches or appliqué stitches. Use decorative stitches or utility stitches to sew a pattern on the cup.



(6) With the right sides of the front and back pieces together as shown below, sew along the stitching line, leaving an opening. Cut off the four corners of the seam allowance at an angle.



(7) Turn right side out through the opening, and then reshape. Sew an edge-stitched seam all around the edge to close the opening.



[Actual-size layout diagram]

