

## 000126. Appliqué Embroidered Potholder



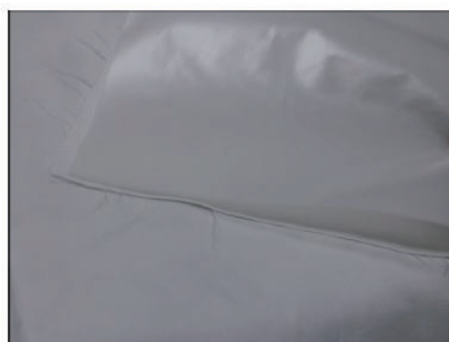
### Material

Appliqué fabric  
 Base fabric (30 cm × 60 cm)  
 Bias tape  
 Quilt batting (30 cm × 30 cm)  
 Iron-On Fabric Applique Contact Sheet  
 Sewing machine thread  
 Machine embroidery thread  
 Embroidery machine  
 Sewing Scissors  
 Ruler

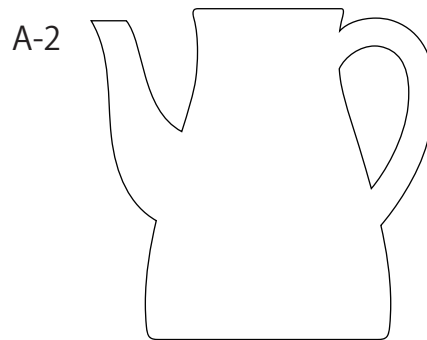
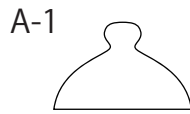
◆ This project uses an embroidery machine with a 13 cm x 18 cm embroidery frame. Download embroidery data (.pes) from the ZIP file. Use it without scaling. (.pes file is the embroidery design format for Brother embroidery machines. .pes file cannot be read in ScanNCutCanvas.)

◆ If you do not have an embroidery machine, use the procedure shown in “000125 Appliqué Potholder” . This will help you achieve a similar result.

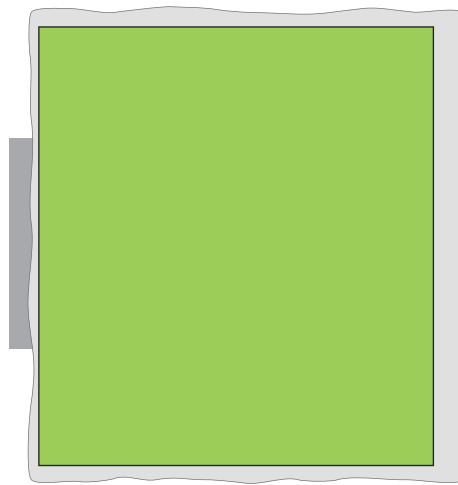
(1) Attach Iron-On Fabric Applique Contact Sheet to the back of the appliqué fabric. (For details, refer to the instructions included with the sheet.)



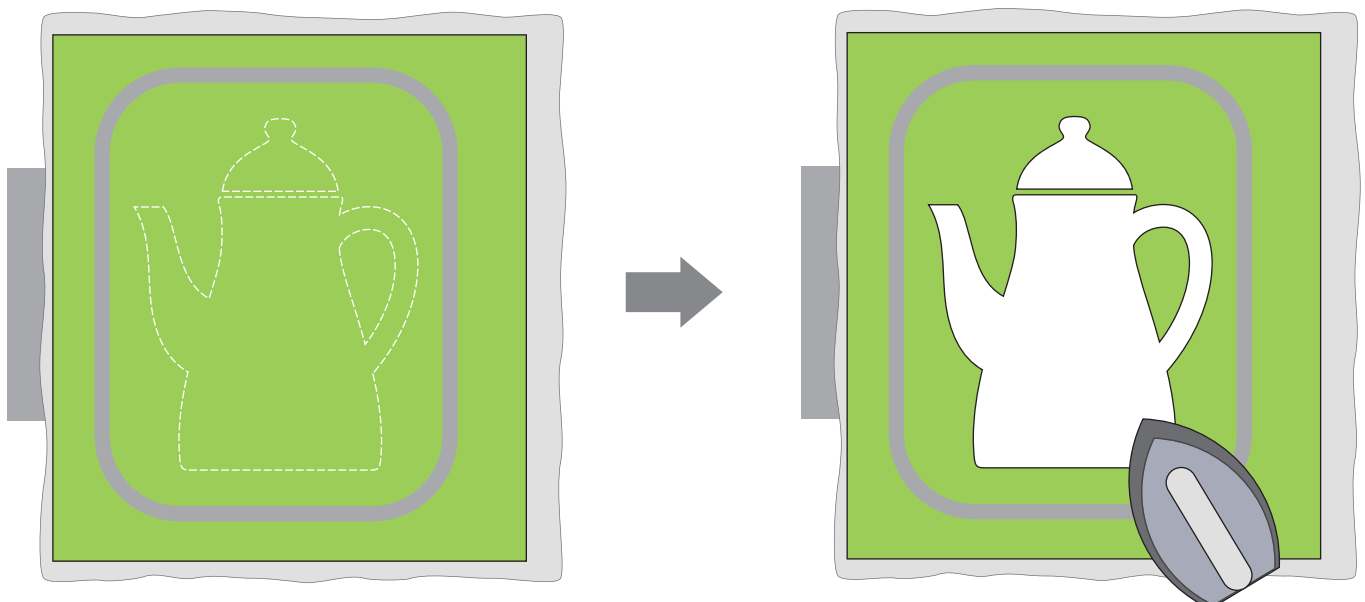
(2) Cut out part A.



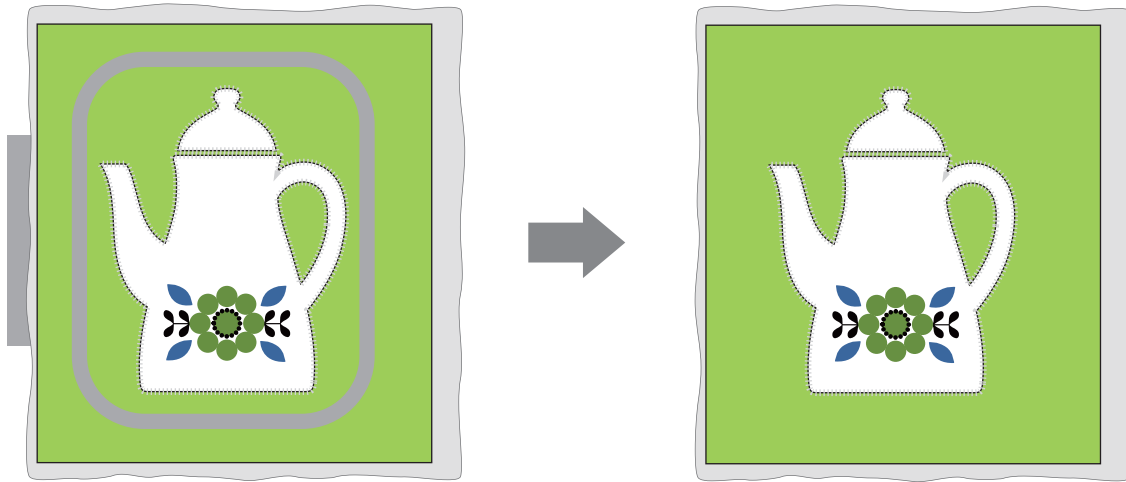
(3) Cut the base fabric to an appropriate size and stack it on the quilt batting, and then hoop them in the embroidery frame. (For details on embroidering, refer to the instructions included with the embroidery machine.)



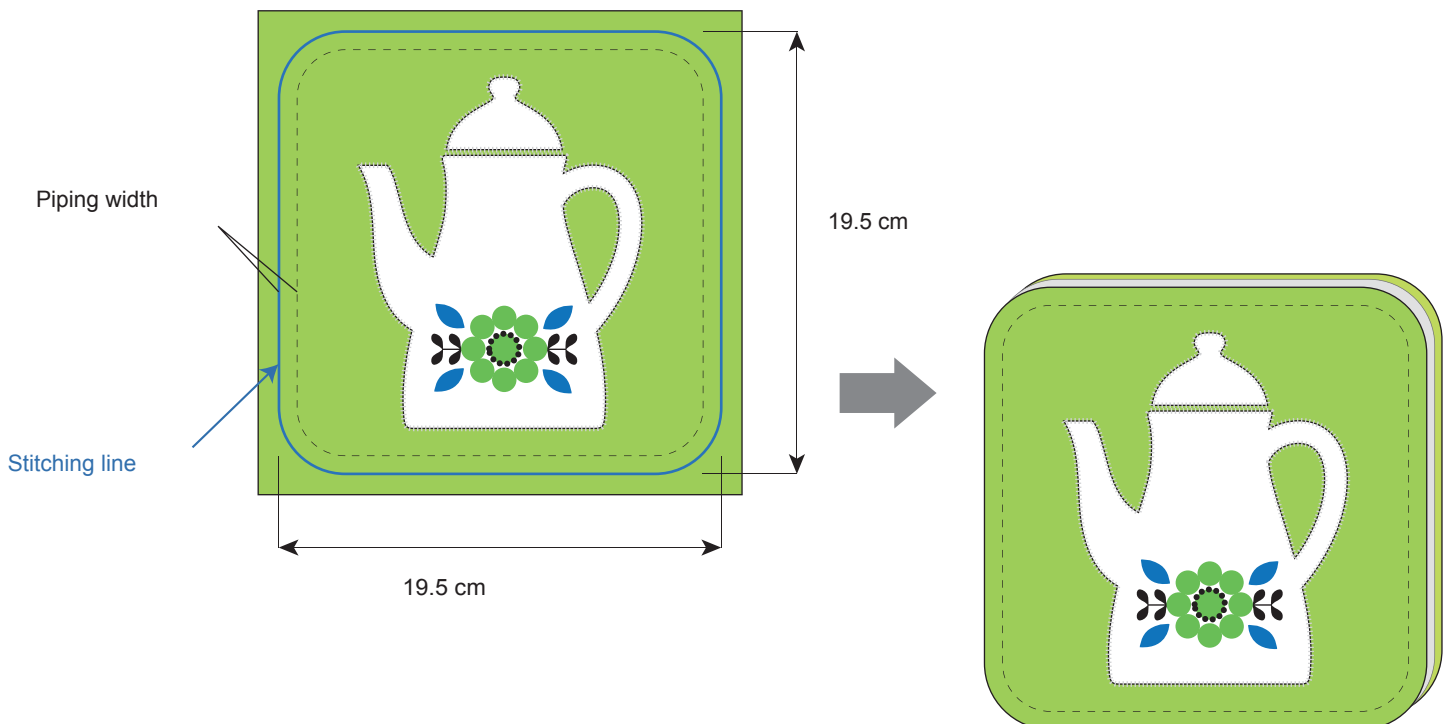
(4) Sew according to the downloaded embroidery data. After sewing the [position of the appliqué], remove the embroidery frame from the machine, and then temporarily secure the appliqué fabric from step (2) by pressing it using the front tip of the iron.



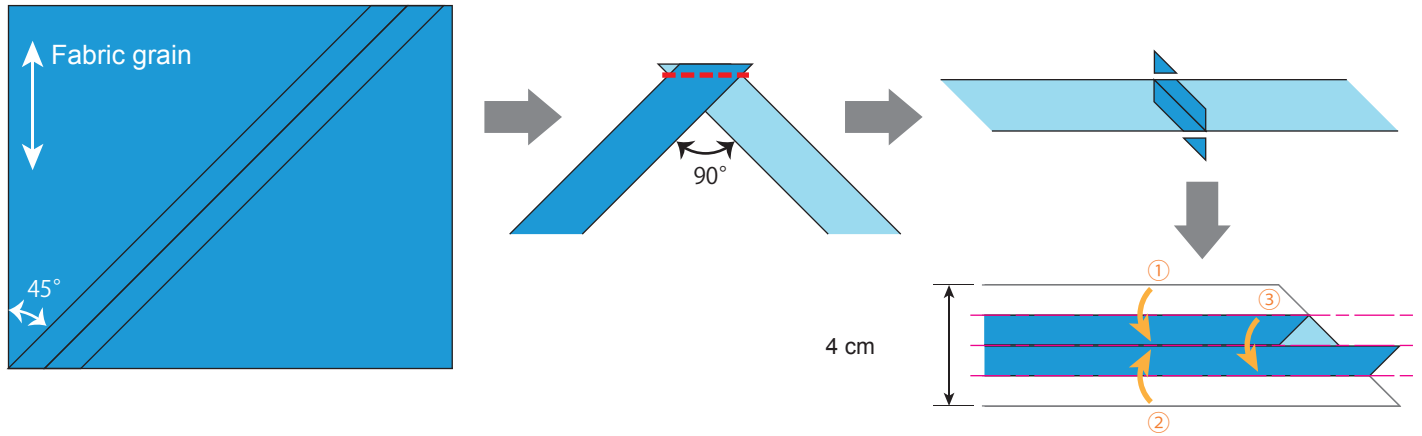
(5) Re-attach the embroidery frame to the machine, and then continue embroidering. After finishing sewing, remove the fabric from the frame, and then iron the fabric.



(6) Refer to the layout pattern on the last page, mark the stitching line and cut it using scissors. Cut along the back pieces in the same way and stack them as shown below.



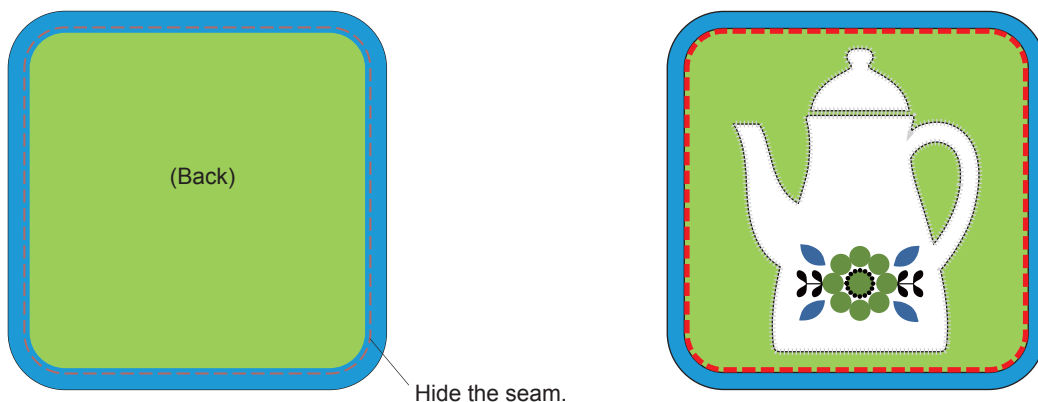
(7) Make the bias tape. (This step can be skipped if pre-made bias tape is used.)



(8) Align the bias tape with the edge of the potholder, secure it, and then sew around the edge.



(9) Fold the bias tape over to the back to cover the seam allowance, and then secure it so that it hides the seam. Sew the bias tape at the front using a concealed seam or zigzag stitching.



Actual-size layout diagram

