

## 000216. Snowman Gift Box



### Material

Universal pen holder (CAUNIPHL1)

Paper/Cardstock - 5 kinds

Medium-thick yarn (red, white) – Approx. 50cm/19.7" each color

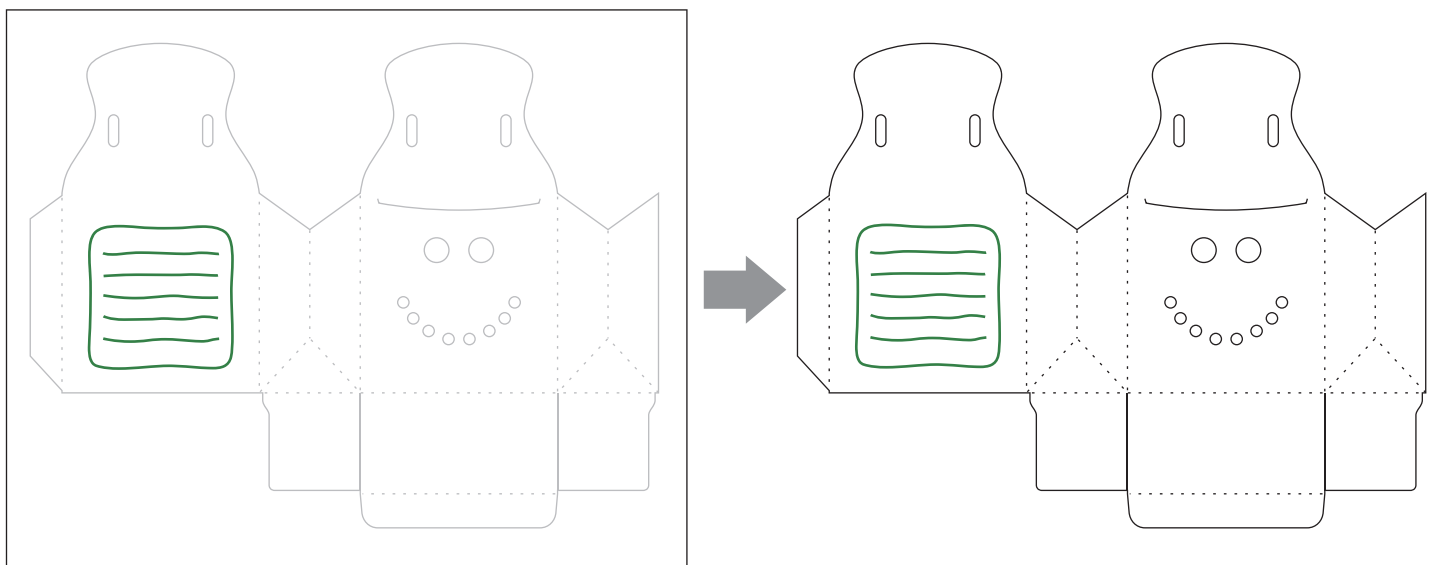
Glue or double-sided tape

Pen (like fine tip marker, green)

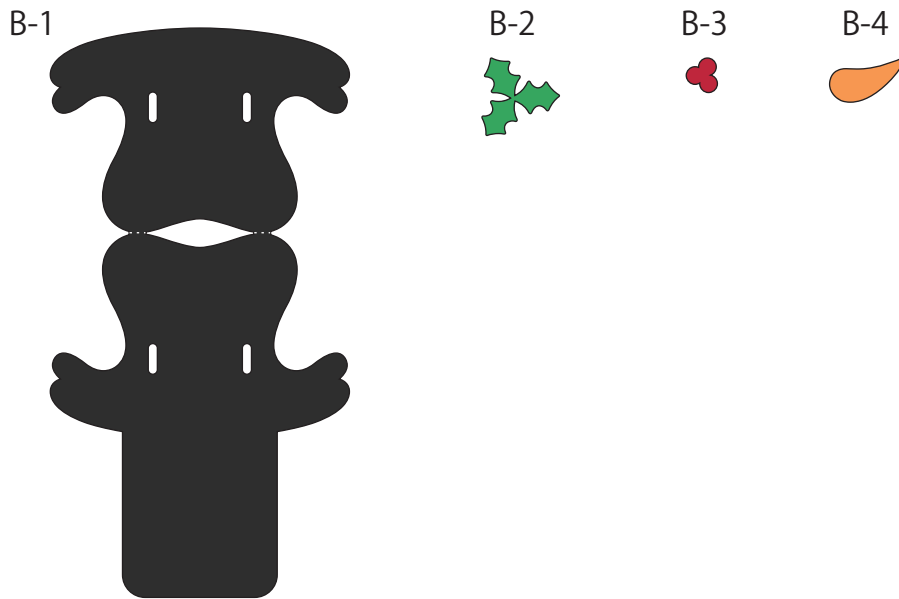
(1) Insert the pen into the optional universal pen holder, and then install the pen holder in the machine. (For details, refer to the manual included with the machine.)

(2) After drawing pattern A, install the standard cut blade holder and cut it out.

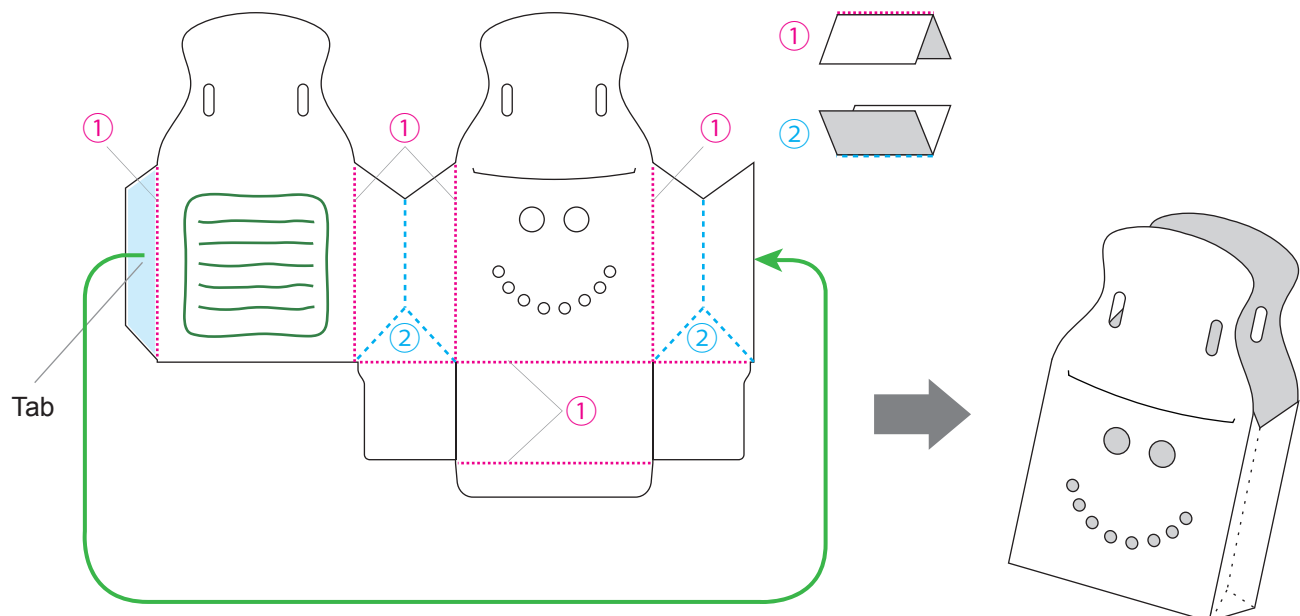
A



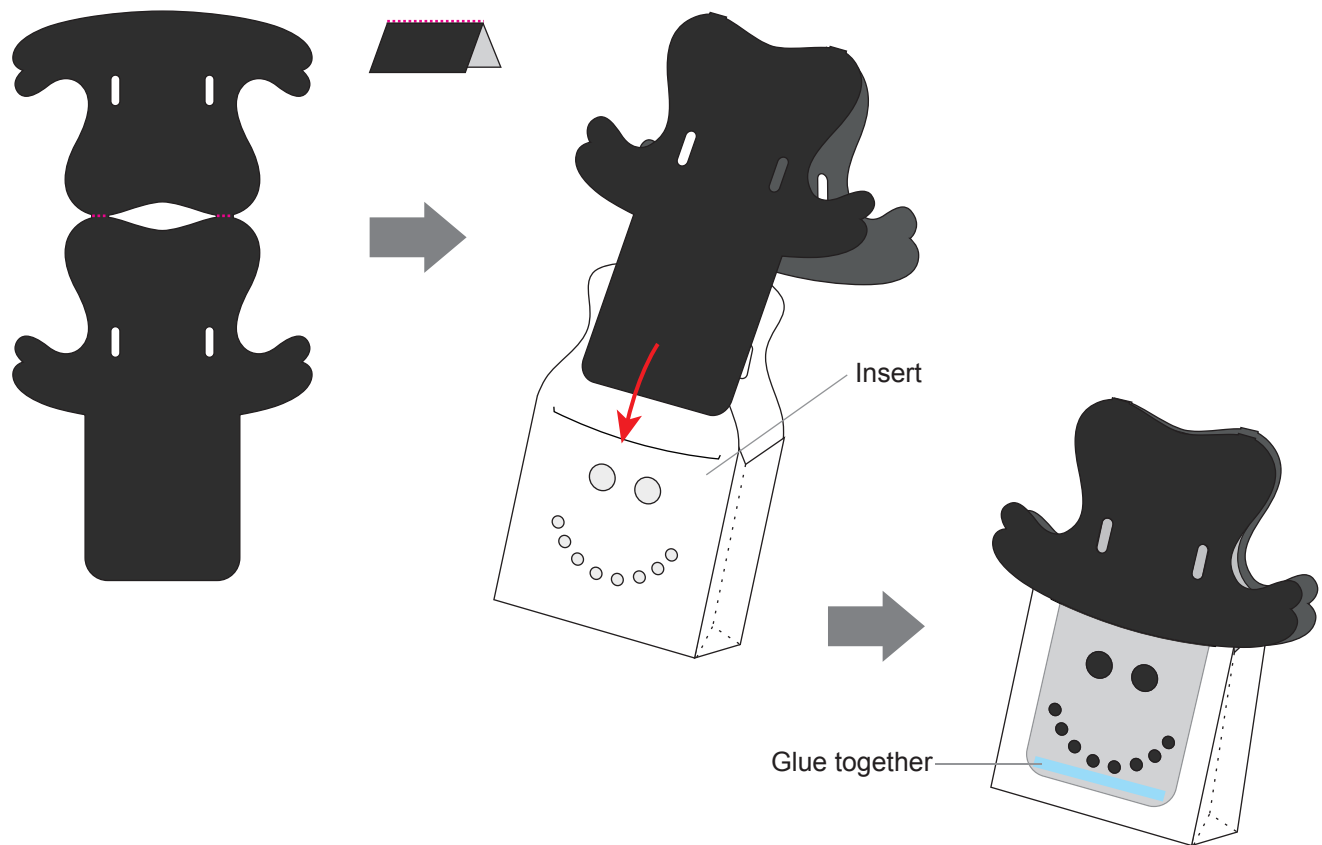
(3) Cut out part B.



(4) Fold A along the dotted lines as shown below, and then apply glue to the tab and assemble the box.



(5) Fold B-1 along the dotted lines as shown below, insert its tab into the cut in the piece assembled in step (4), and then glue the tab from the inside.



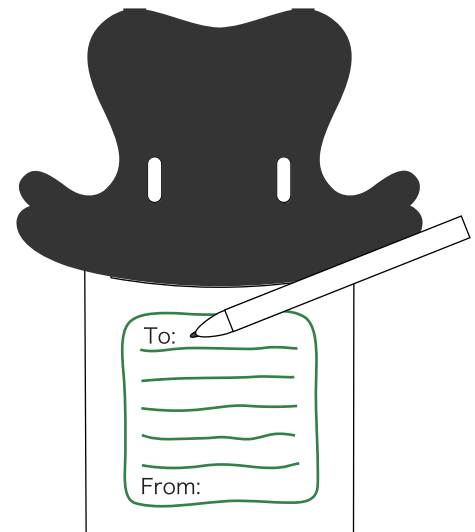
(6) Glue on B-2 through B-4 as shown below.



(7) Twist together the red and the white strands of yarn, and then make a knot in each end to make the string.



(8) Pass the string assembled in step (7) through the holes in the hat and tie a bow, and then write a message on the back, as shown below.



Back