

000225. Jewelry Made from Shrink Plastic



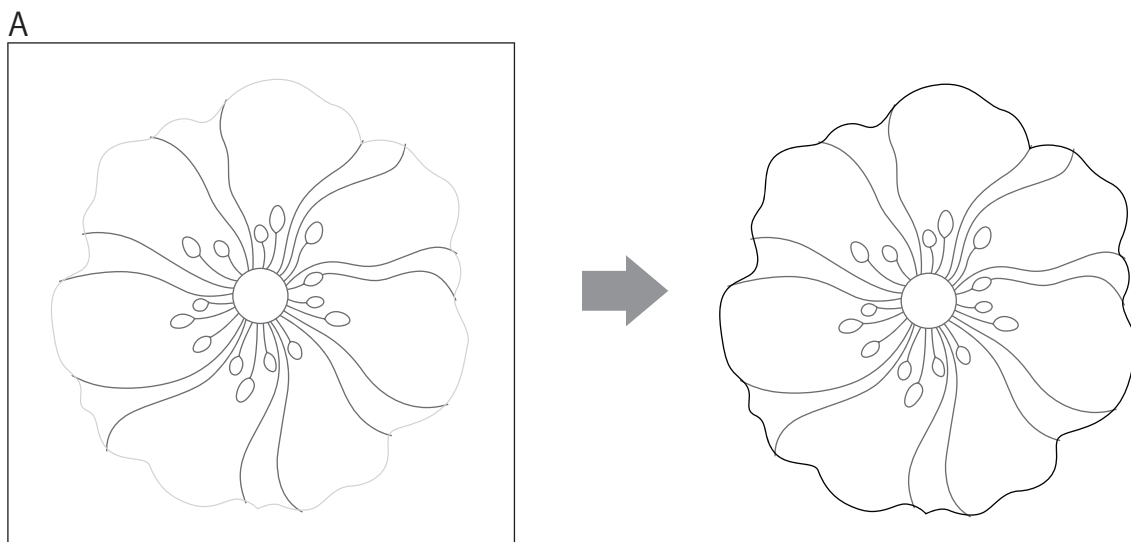
Material (per item)

Universal pen holder (CAUNIPHL1)
 High tack adhesive fabric support sheet (CASTBL2)
 Shrink plastic sheet (0.2 to 0.3mm/0.008 to 0.012" thick, white)
 Felt (white)
 Rhinestone (9 mm/0.35" diameter) – 1
 Hair elastic – 1
 Oil-based pen (black)
 Acrylic paint (green shade or orange shade) – 2 colors
 Water-based varnish (clear)
 Brush
 Baking paper or aluminum foil
 Oven or toaster oven
 Oven mitt or pot holder
 Glue gun or high-tack adhesive

(1) Insert the oil-based pen into the optional universal pen holder, and then install the pen holder in the machine. (For details, refer to the manual included with the machine.)

*Depending on machine, filling feature is not applicable. In that case, please fill in letters by hand with the pen.

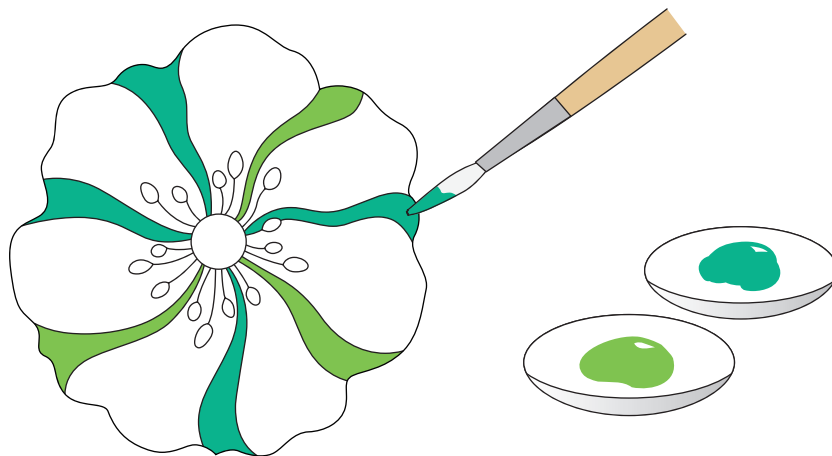
(2) After drawing pattern A on the white shrink plastic sheet, install the standard cut blade holder, and then cut out the pattern.



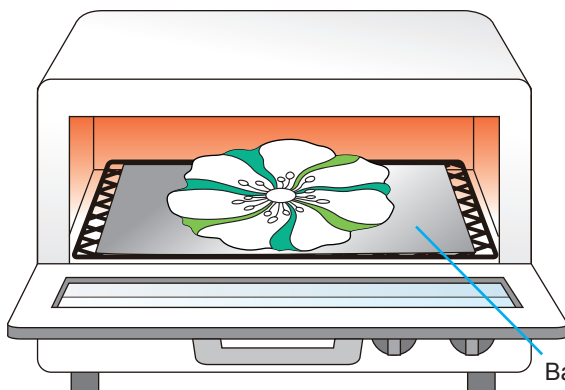
(3) Attach the high tack adhesive fabric support sheet to the standard mat. (For details on attaching the sheet, refer to the instructions included with it.) Cut out part B with felt.



(4) Paint part A with acrylic paint as shown below.



(5) Preheat the oven. On top of baking paper (aluminum foil for the toaster oven), bake the cut shrink plastic piece. (For the temperature setting and baking details, refer to the instructions included with the shrink plastic sheet.)

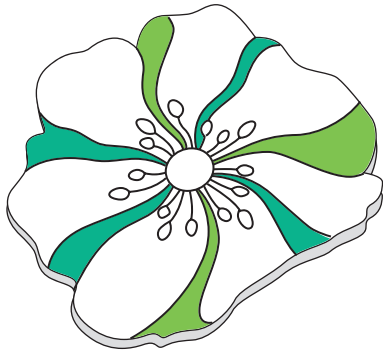


Baking paper or aluminum foil

Caution: Read and follow all of your oven and shrink plastic manufacturer's instructions. Never leave the shrink plastic in the oven unattended, and remove immediately if a problem develops. Use caution when handling before cooled. The shrink plastic will be **HOT**.

(6) After baking, put on the Oven Mitt or Pot Holder and remove it from the oven. While the shrink plastic is warm, press in at the center to form a flower.

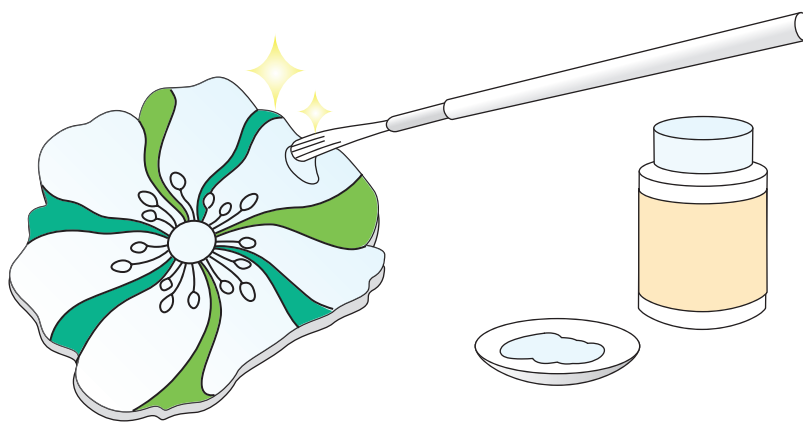
Caution: The shrink plastic will be HOT. Do not directly touch the shrink plastic with your hands. Use caution when handling before cooled.



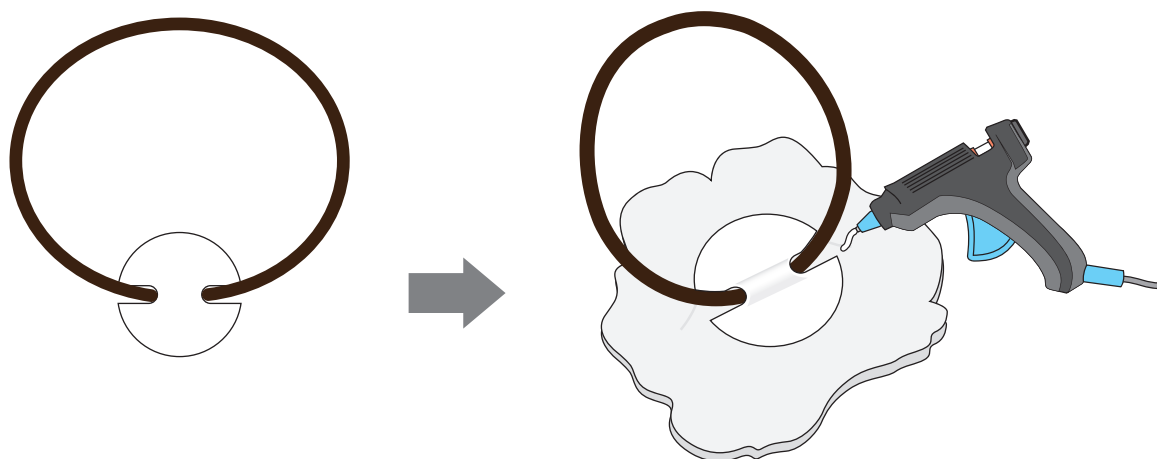
[Side view]



(7) After the paint has fully dried, apply a light coat of the water-based varnish over the entire front surface. After the varnish has dried, apply another coat. Refer to the directions included with the varnish for best results.



(8) Pass the hair elastic through the cutouts in B, and then use the glue gun (or high-tack adhesive) to securely glue B to the back of the piece assembled in step (7), as shown below.



(9) Glue the rhinestone to the center of the flower as shown below.

