

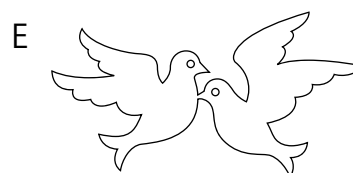
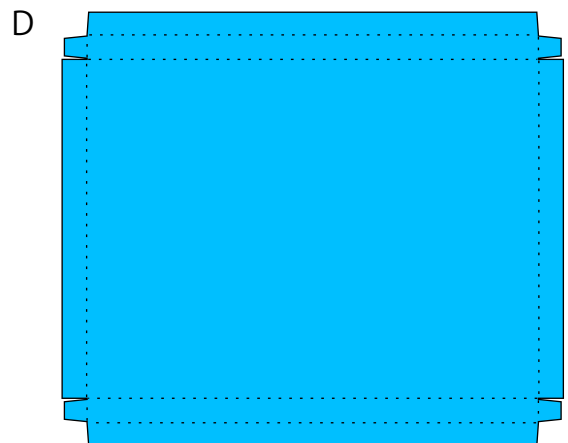
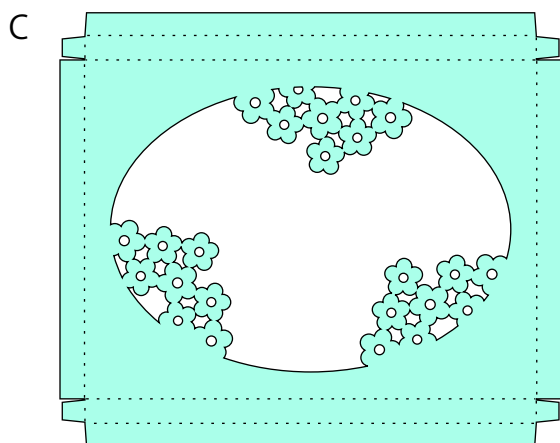
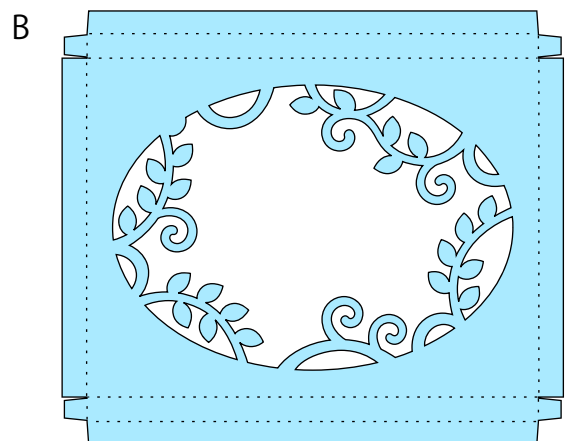
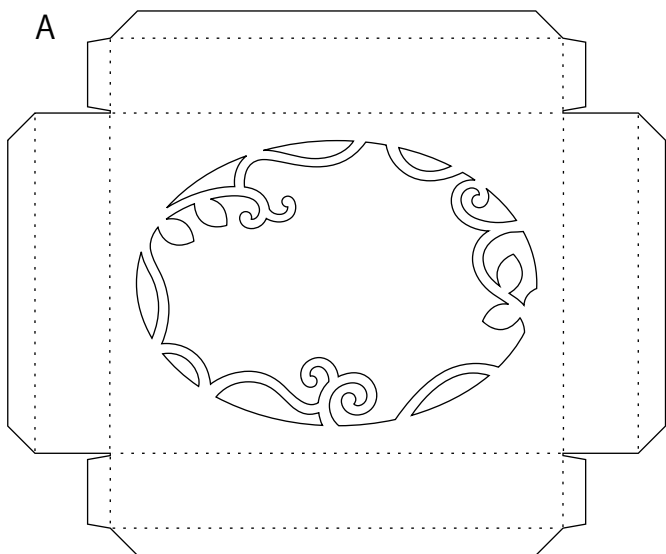
# 000251. Bird Shadow Box



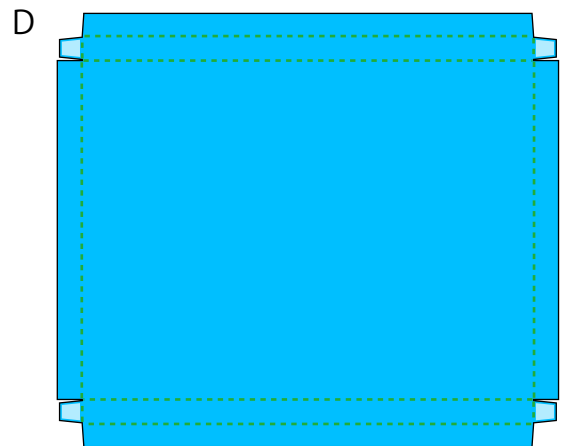
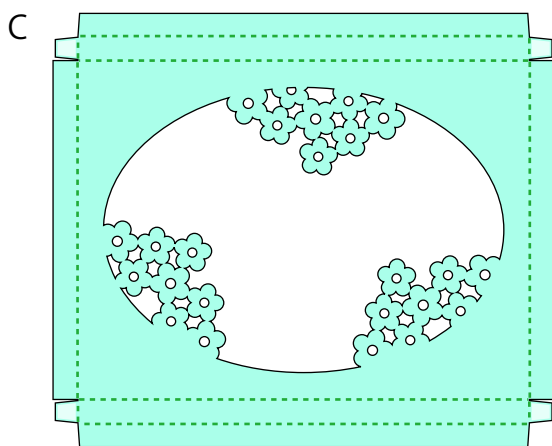
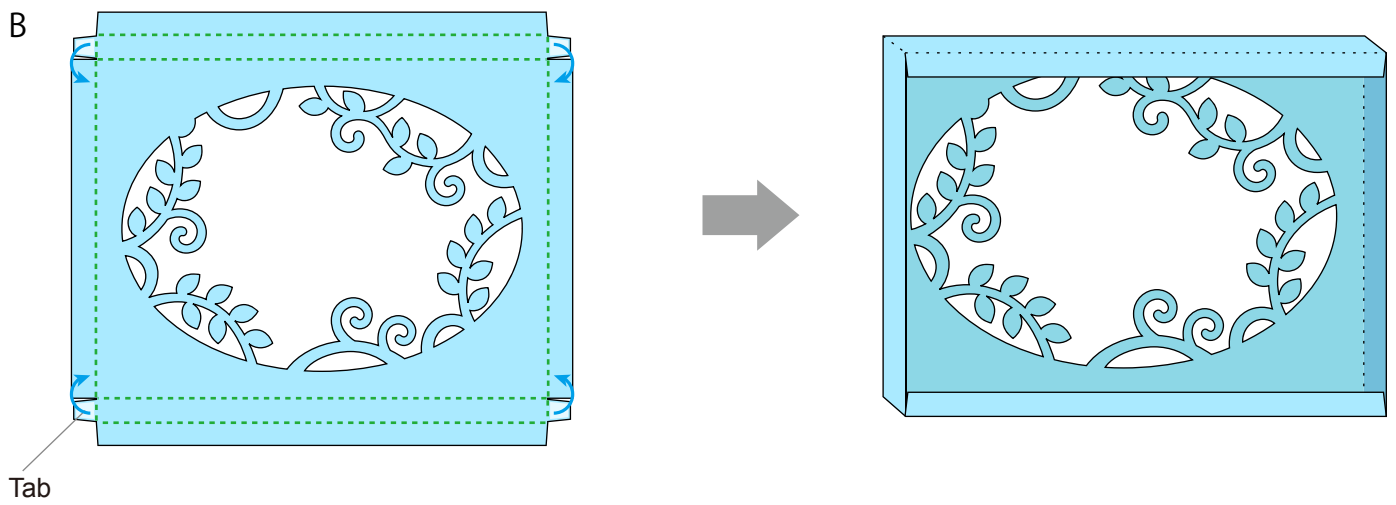
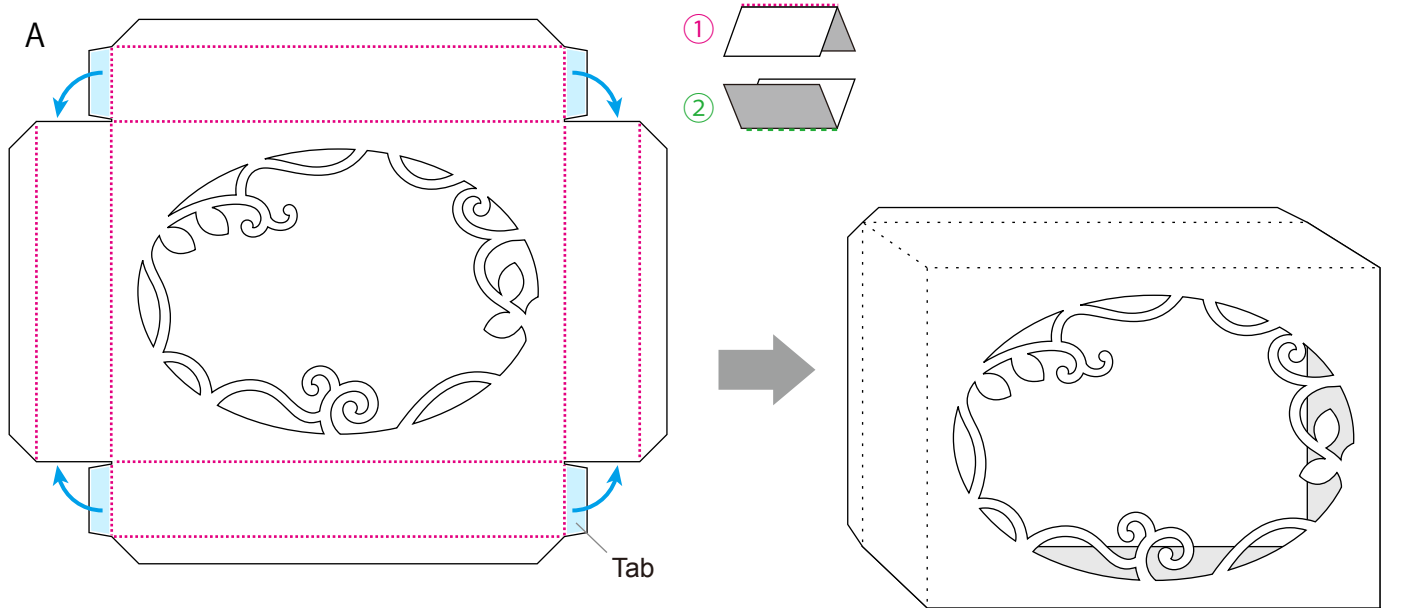
### Material

- Paper/Cardstock – 4 kinds
- Glue or double-sided tape
- Foam adhesive squares

(1) Cut out parts A through E.

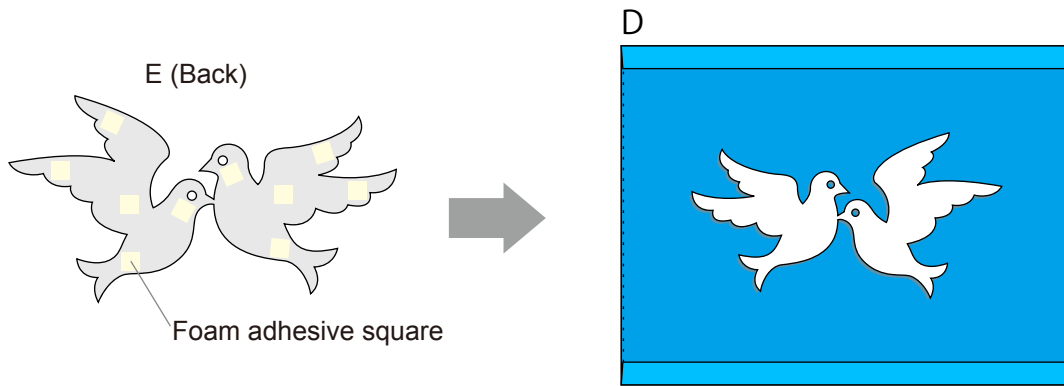


(2) Fold A through D along the dotted lines, and then glue the tabs, as shown below.

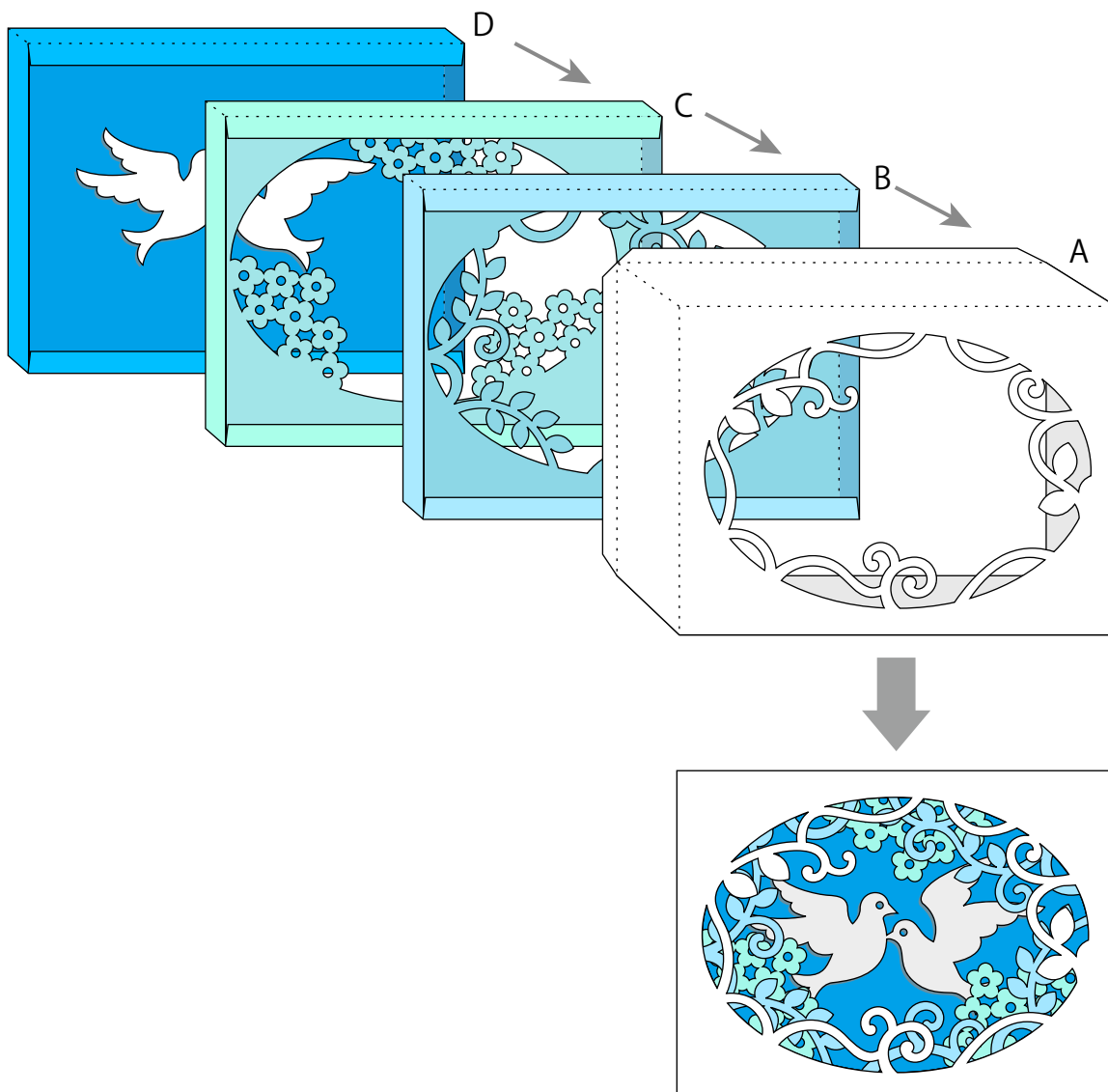


Assemble C and D in the same way.

(3) Glue foam adhesive squares to the back of E, and then attach it to the center of D.



(4) Fit B through D into A.



(5) Glue the tabs of A to the back of D to close the box.

