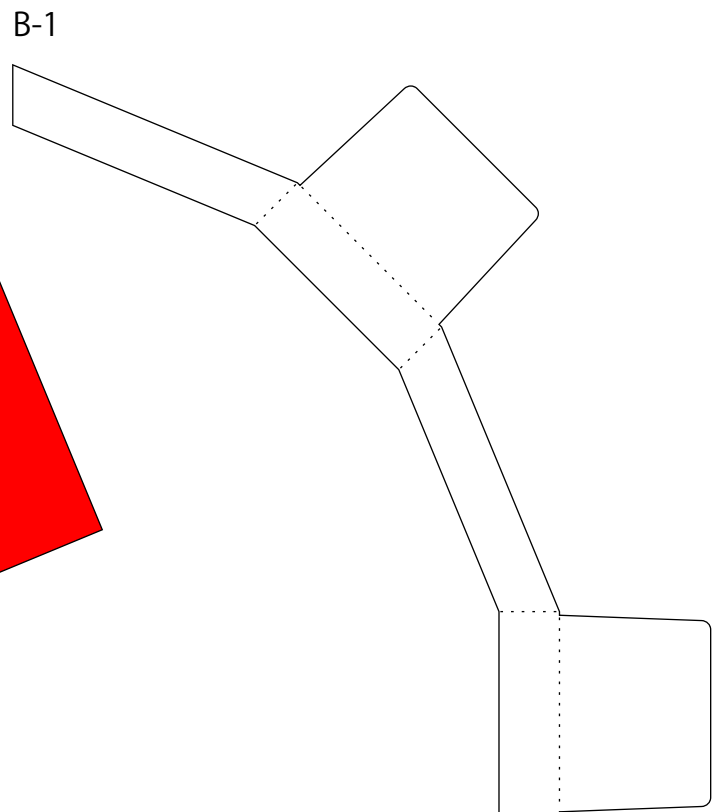
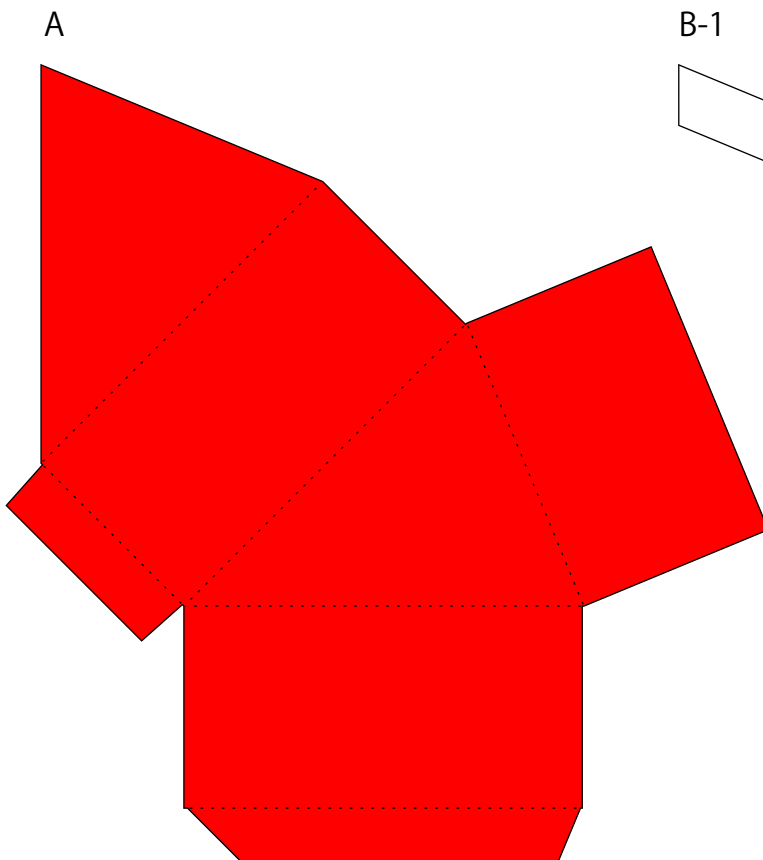


### 000313. Triangular Watermelon Gift Box



**Material (per item)**  
Paper/Cardstock – 3 kinds  
Adhesive sheet (black) – 1 kind  
Glue or double-sided tape  
Paint (dark green or black)  
Brush

(1) Cut out A through C. Cut C from the adhesive sheet.



B-2

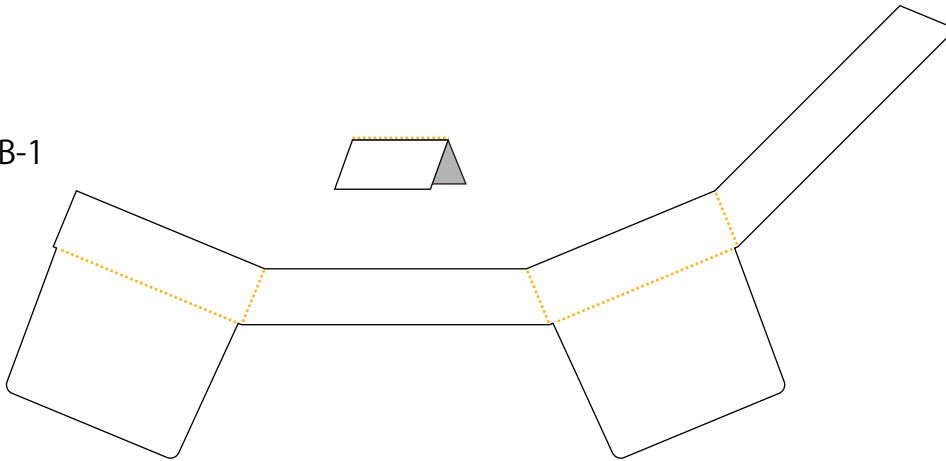


C

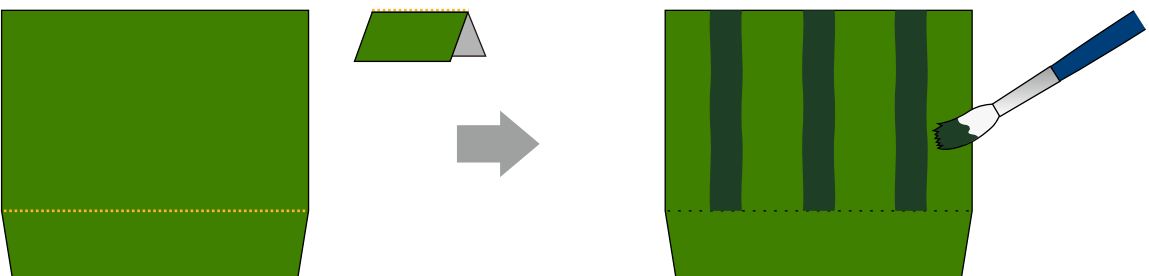


(2) Fold B-1 and B-2 along the dotted lines, and then draw the pattern on B-2, as shown below.

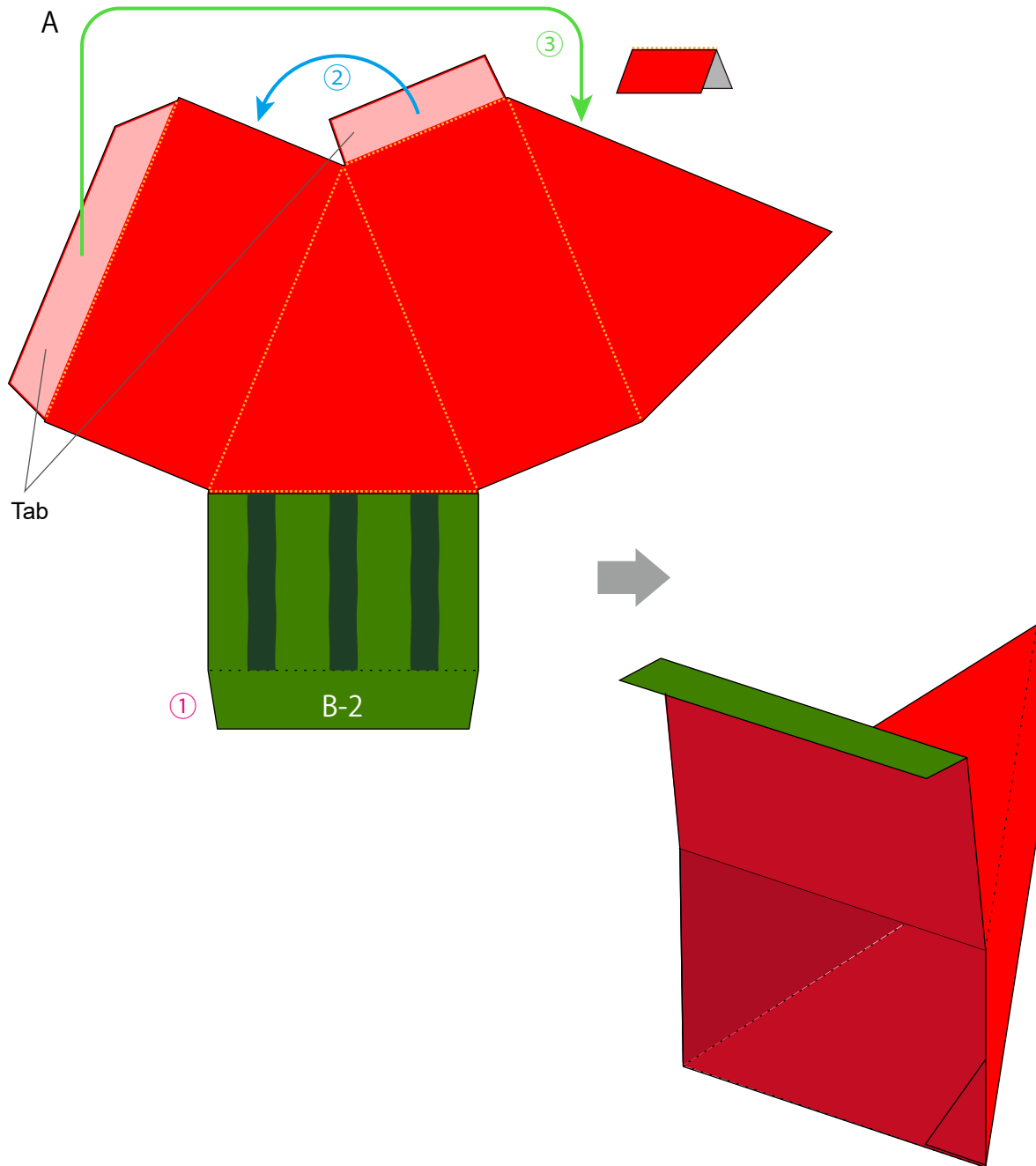
B-1



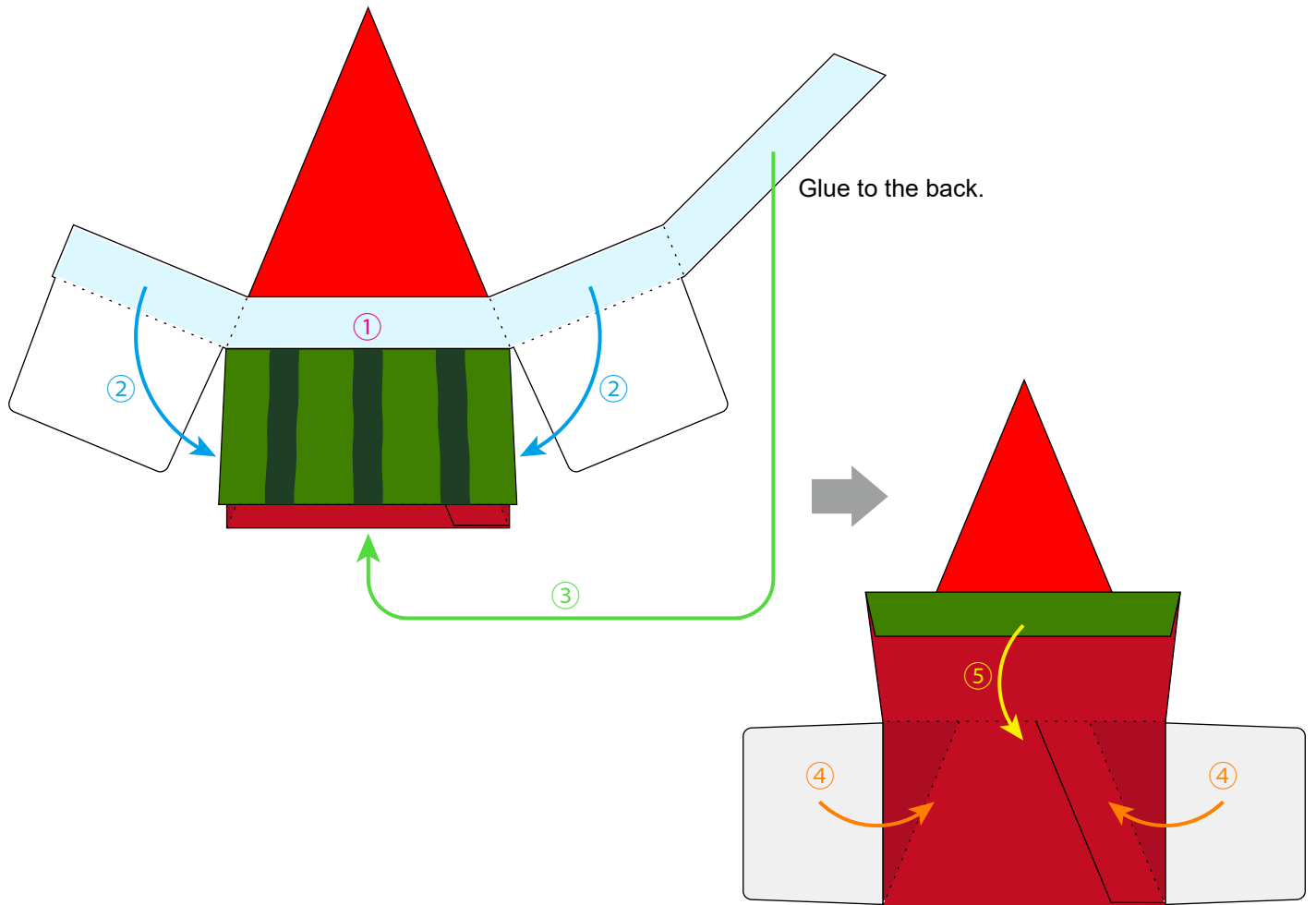
B-2



(3) Fold A along the dotted lines, glue on B-2, and then glue the two tabs, as shown below.



(4) Glue B-1 to the piece assembled in step (3), and then close the flap, as shown below.



(5) Glue C to the piece assembled in step (4), as shown below.

